



IN-LINE CABLE CONNECTOR

AVA are now offering the WEiPU IP67/IP68 in line cable connector as an alternative to our standard pre wired connection option. The SP17, SP13 and SP21 are IP68 threaded connector couplings. The SP13 and SP17 have a robust housing, large cable entry and higher voltage rating. The connector can allow a plug and play connection between the actuator (pre wired) and your PLC.

Rated current and V: 13A-3A, 500V-400V

Cable outer diameter is 6-10mm with 2-10 gold plated contacts available.

CE and ROHS Approved.



Material	Plastic
IP Rating	IP68
Coupling Type	Threaded coupling
Shell	Nylon66, fire resistance: V-0
Insert material	PPS max temperature 260°C , fire resistance: V-0
Contact material	Brass with gold plating
Termination	Solder/Crimp
Cable outer diameter range	6-10mm
Mating cycle	> 500
Temperature range	-25°C~+85°C
Insulation resistance MΩ	2000

Picture	Description	Drawing
	<p>In-Line Cable Connector Male</p> <p>SP1711/P</p>	





IN-LINE CABLE CONNECTOR

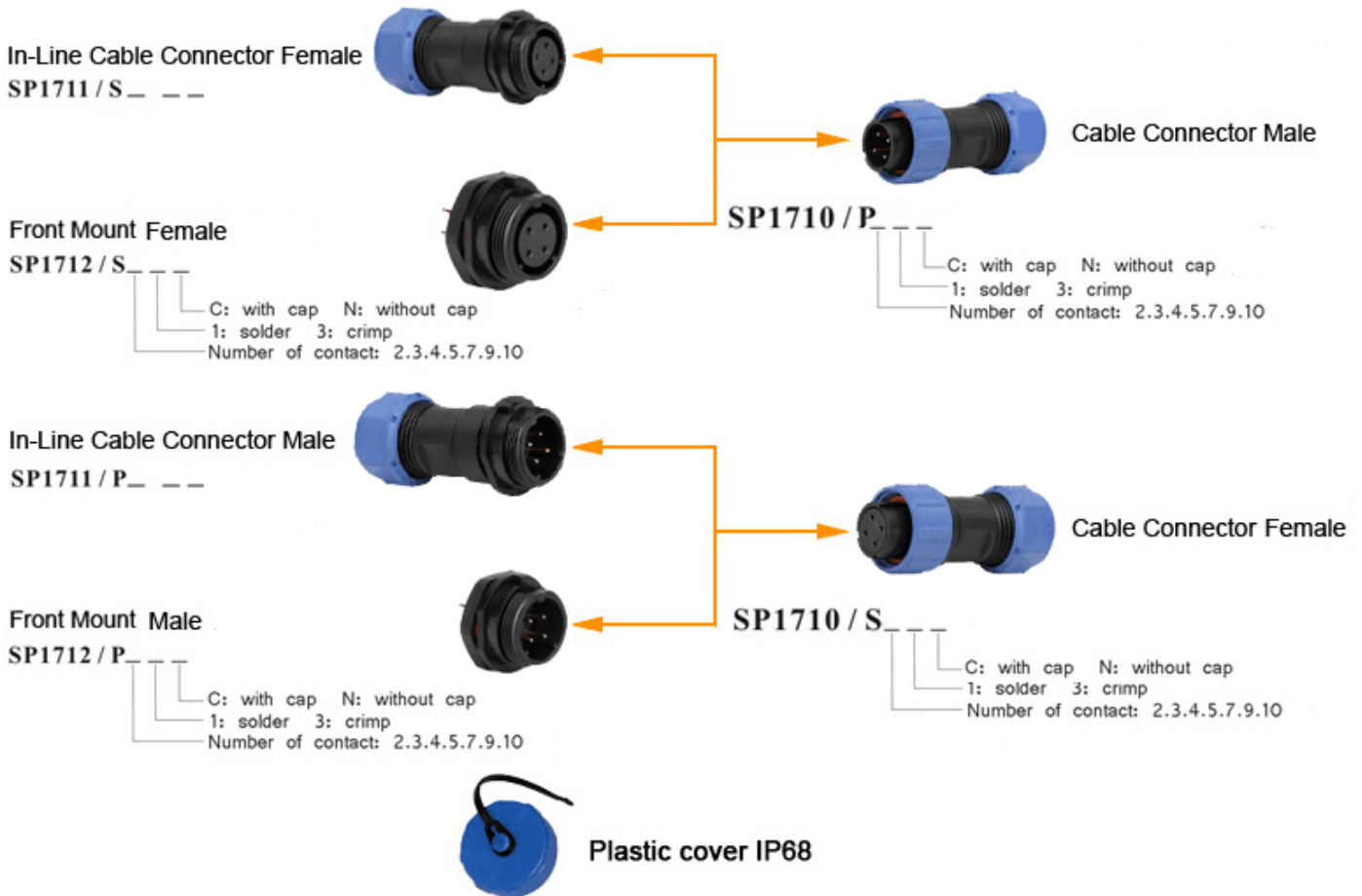
Number of contact	2	3	4	5	7	9	10
Male contact face view							
Rated current (A)	10A	10A	5A	5A	5A	5A	5A
Contact diameter	∅ 1.5×2	∅ 1.5×3	∅ 1×4	∅ 1×5	∅ 1×7	∅ 1×9	∅ 1×10
Rated voltage(AC.V)	500V	500V	500V	500V	400V	400V	400V
Test voltage(AC.V)1 min	1500V	1500V	1500V	1500V	1200V	1200V	1200V
Contact resistance mΩ	2.5	2.5	5	5	5	5	5
Wire size mm ² /AWG	≤2/14	≤2/14	≤0.785/18	≤0.785/18	≤0.785/18	≤0.785/18	≤0.785/18

★ Crimp contact arrangement and spec

Number of contact	2	3	4
Male contact face view			
Rated current (A)	10A	10A	5A
Contact diameter	∅ 1.5×2	∅ 1.5×3	∅ 1×4
Rated voltage(AC.V)	500V	500V	500V
Test voltage(AC.V)1 min	1500V	1500V	1500V
Contact resistance mΩ	2.5	2.5	5
Insulation resistance mΩ	2000	2000	2000

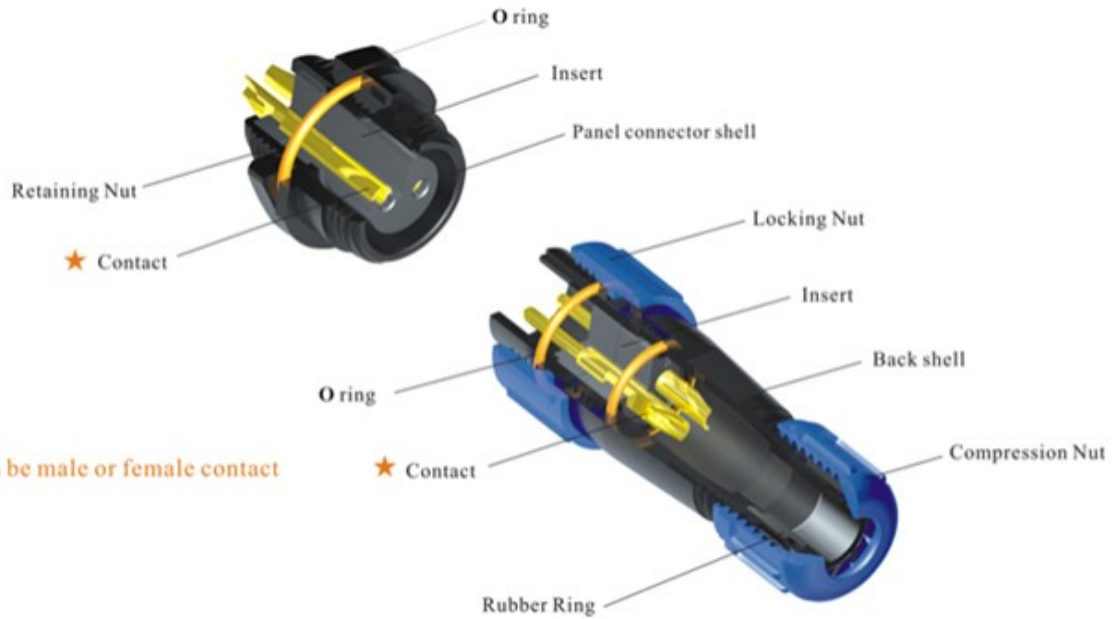
IN-LINE CABLE CONNECTOR

● SP17 Series Mating diagram



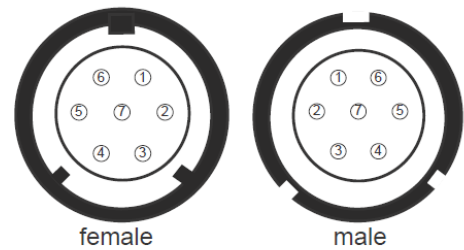
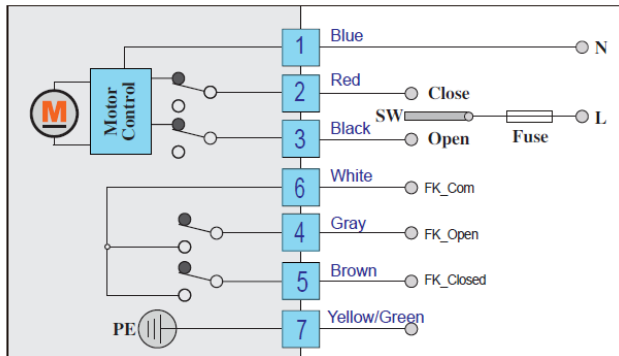
IN-LINE CABLE CONNECTOR

● SP1712/S



Each side can be male or female contact

B3S



Control instructions:

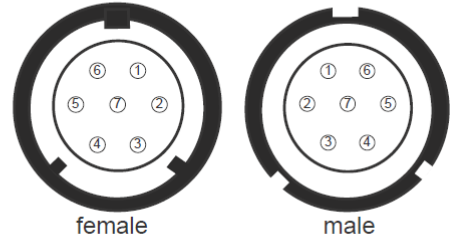
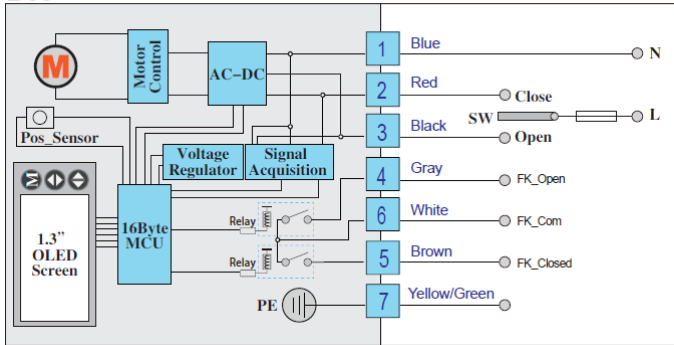
- SW is connected with [2], the actuator will rotate clockwise ↻. When the valve is closed, [6] is connect with [5], giving signal of closing.
- SW is connect with [3], the actuator will rotate anticlockwise ↻. When the valve is open, [6] is connect with [4], giving signal of opening.
- ※ Notice 1: [6] is not connected with [4] and [5], when the actuator is rotating.
- ※ Notice 2: The feedback signal is a little earlier than the actual position, so please do not cut power immediately, when you get the feedback signal.

BASIC SERIES ON OFF WIRING

ALL SERIES / VOLTAGES

IN-LINE CABLE CONNECTOR

B3J



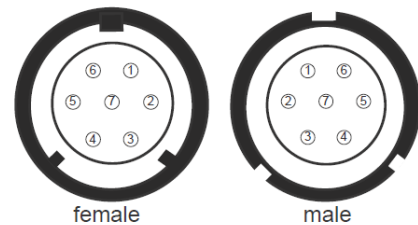
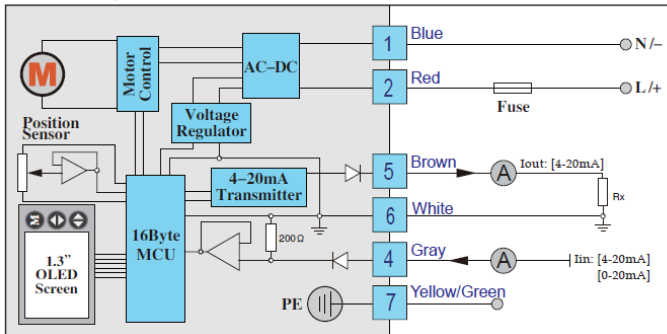
Control instructions: [7-core]

- SW is connected with [2], the actuator will rotate clockwise ↻. When the valve is closed, [6] is connect with [5], send signal of full close.
- SW is connected with [3], the actuator will rotate anticlockwise ↻. When the valve is open, [6] is connect with [4], send signal of full open.
- ※ Note 1: [6] is not connected with [4] and [5], when the actuator is operating.
- ※ Note 2: After power cut, the feedback and fault signal will disappear, [6] is not connected with [4] and [5].

SMART SERIES ON OFF WIRING

ALL SERIES / VOLTAGES

4-20mA/0-20mA



Control instructions - [No Alert/ 7-core] :

- 1 [2] [1] are power supply.
- 2 [4] [6] [5] are Control input and feedback output .
 ※ They are forbidden to connect the power supply, otherwise it will damage the control module.
- 3 Make sure voltage practicable range, ※ otherwise it will damage the control module.
- 4 [4] is control current input: 4-20mA, 0-20mA, 0-5V, 0-10V, 2-10V, input impedance refers to relevant wiring diagram.
- 5 [5] is feedback current output: 4-20mA.
- 6 $V_{out} = I_{out} \cdot R_x$,
 △ R_x is recommended to use low TCR resistor.
 △ $V_{OUT} \leq 8V$, so $R_x \leq 400\Omega$ (recommended $V_{out} = 5V, R_x = 250\Omega / 0.25W$).
- 7 ※ For "4-20mA/1-5V/2-10V" control, from "user setting", user can set no control signal valve to full-open, full-close or keep. For other control (0-20mA, 0-10V, 0-5V), such setting is invalid.
- 8 When actuator is stuck or other working failures, output failure signal.
 Contactor loading capacity: 0.1A/DC24V, 50mA/230V.

SMART SERIES MODULATING WIRING

ALL SERIES / VOLTAGES